



## FOUR SEASONS SUITE WITH POOL

Cool off from the desert sun in your own full-sized pool – the ultimate indulgence. Detailed with the latest in design and technology, this expansive one-bedroom suite features a luxe living and dining area and a chic poolside terrace. Your bathroom is a spa-like sanctuary with a bath tub.



# DETAILS

---

## BEDS

One king bed, One sofabed, plus one rollaway or crib upon request

---

## OCCUPANCY

4 adults, or 2 adults and 3 children ages 12 and under

---

## SIZE

- 156 m2 (1,679 sq.ft.)
- Lower level

---

## BATHROOM

- One sunlit marble bathroom, including two vanity sinks, water closet, glass-walled shower and bath tub
- One guest powder room with shower

---

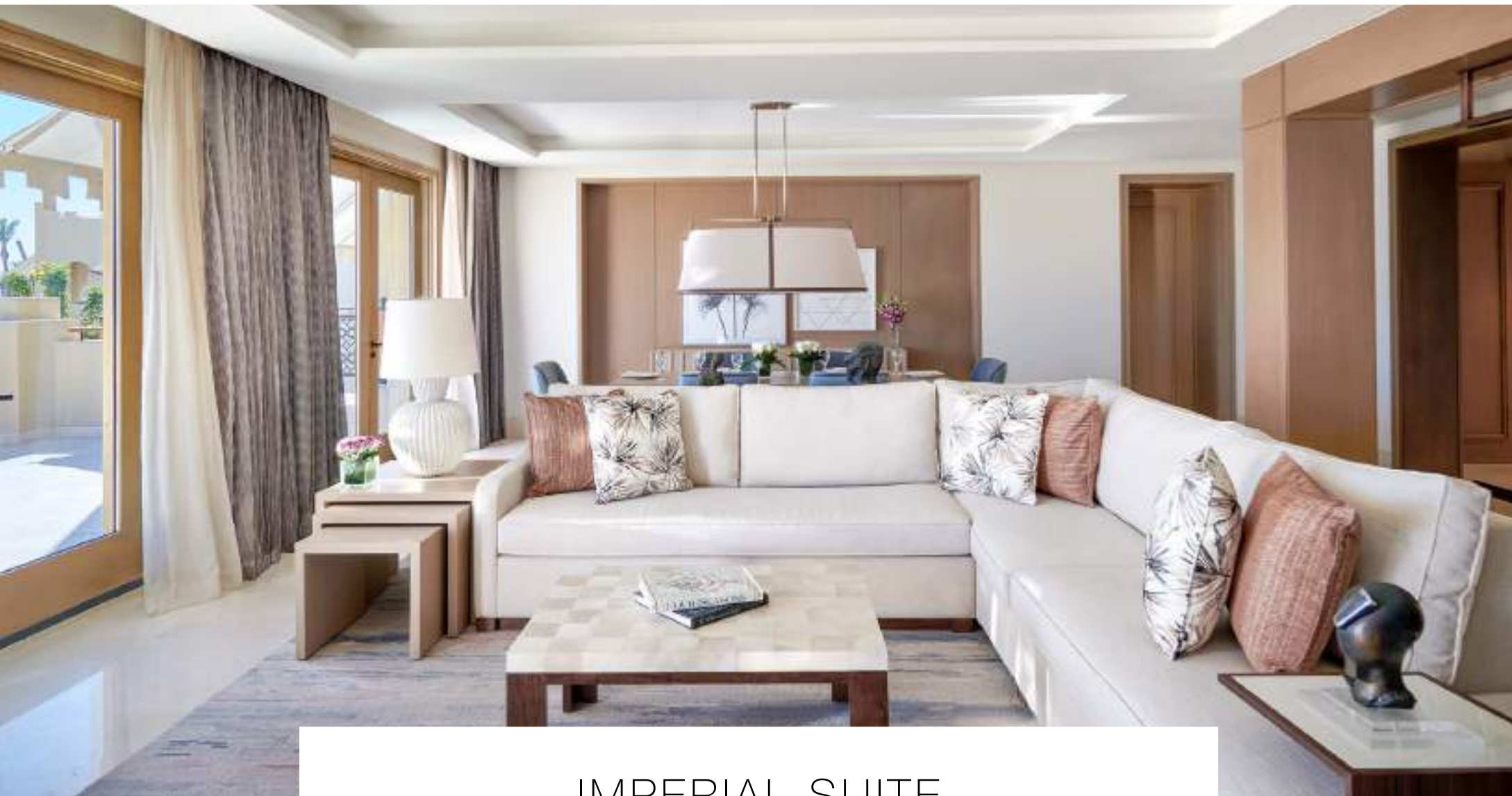
## VIEWS

Partial Red Sea

---

## UNIQUE FEATURES

- 10.5-square-metre private heated pool
- Two terraces, one with lounge chairs
- Dining table
- Two walk-in closets for him and her
- Coat closet at entrance



## IMPERIAL SUITE

---

Perfect to share with friends and family, this extra-spacious two-bedroom suite offers the latest Four Seasons luxury, including sleek modern décor and state-of-the-art technology. From the inviting foyer, step into the grand living and dining area, flowing outdoors to a balcony furnished for entertaining.

Prepare dinner in your own kitchen or request a Four Seasons private chef.



# DETAILS

## BEDS

Two king beds or one king bed and two twin beds, Two sofas, plus three rollaways or cribs upon request

## OCCUPANCY

4 adults and 1 child, or 2 adults and 3 children ages 12 and under

## SIZE

- 255 m2 (2,745 sq.ft.)
- Upper level

## BATHROOM

- Master marble bathroom, including two vanity sinks with in-mirror TV, water closet with bidet, glass-walled shower, window-side tub and his and her walk-in closets
- Spa-like marble bathroom, including two vanity sinks with in-mirror TV, water closet, glass-walled shower and bath tub
- Guest powder room with shower

## VIEWS

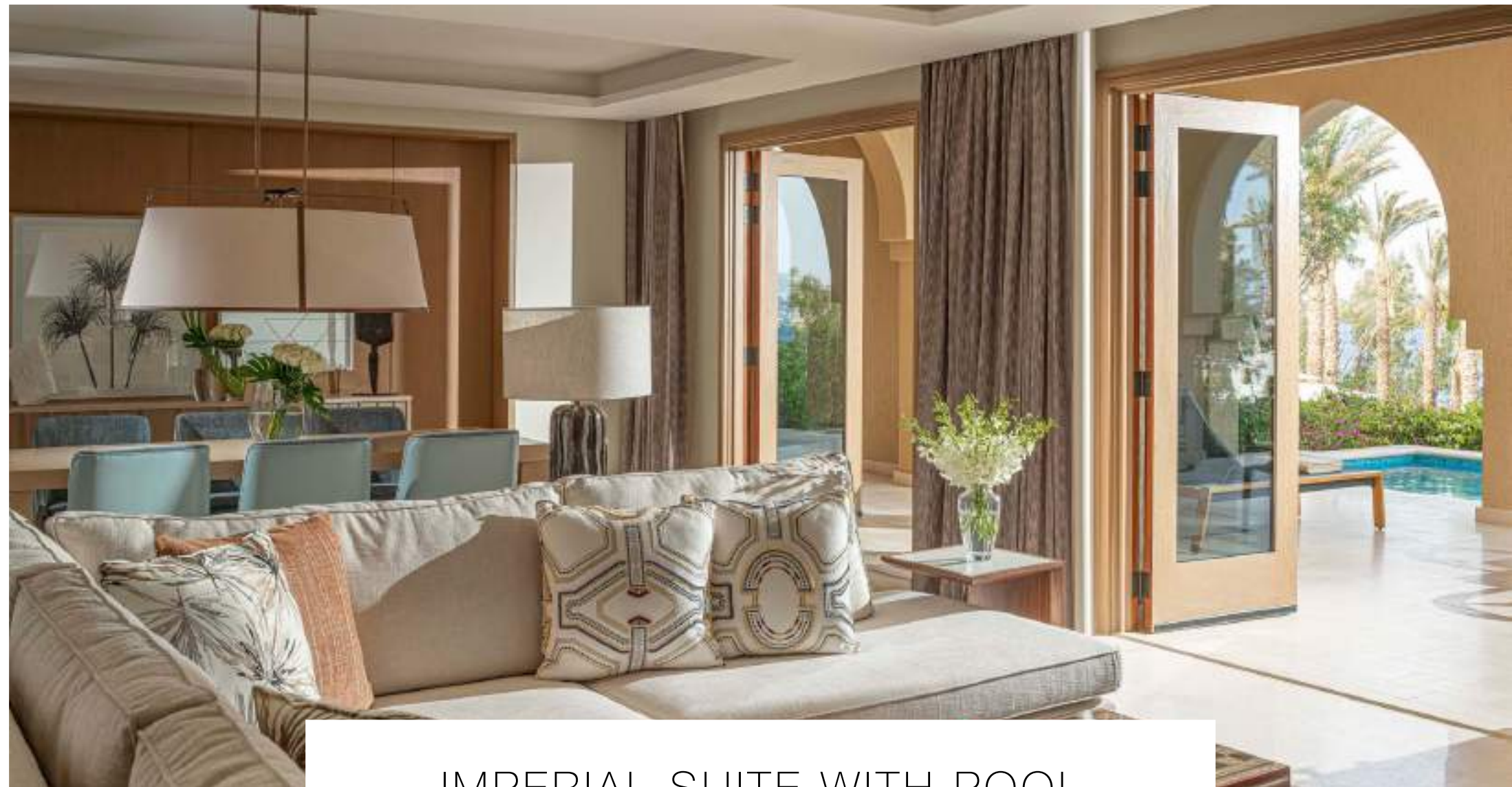
Red Sea

## UNIQUE FEATURES

- Inviting entry foyer
- Living room with dining table for eight and wet bar
- Outdoor terrace with three sofas and dining table for six
- 18-square-metre private heated pool
- Fully equipped kitchen with separate service entrance
- Two bedrooms with private terraces
- Two walk-in closets for him and her

## FLOOR PLAN





## IMPERIAL SUITE WITH POOL

With its own full-sized pool overlooking the Red Sea, this spectacular two-bedroom suite offers the latest Four Seasons luxury, including sleek modern décor and state-of-the-art technology. From the inviting foyer, step into the grand living and dining area, flowing outdoors to a poolside terrace.

Prepare dinner in your own kitchen or request a Four Seasons private chef.



# DETAILS

## BEDS

Two king beds or one king bed and two twin beds, Two sofas, plus three rollaways or cribs upon request

## OCCUPANCY

4 adults and 1 child, or 2 adults and 3 children ages 12 and under

## SIZE

- 255 m2 (2,745 sq.ft.)
- Lower level

## BATHROOM

- Master marble bathroom, including two vanity sinks with in-mirror TV, water closet with bidet, glass-walled shower, window-side tub and his and her walk-in closets
- Spa-like marble bathroom, including two vanity sinks with in-mirror TV, water closet, glass-walled shower and bath tub
- Guest powder room with shower

## VIEWS

Partial Red Sea

## UNIQUE FEATURES

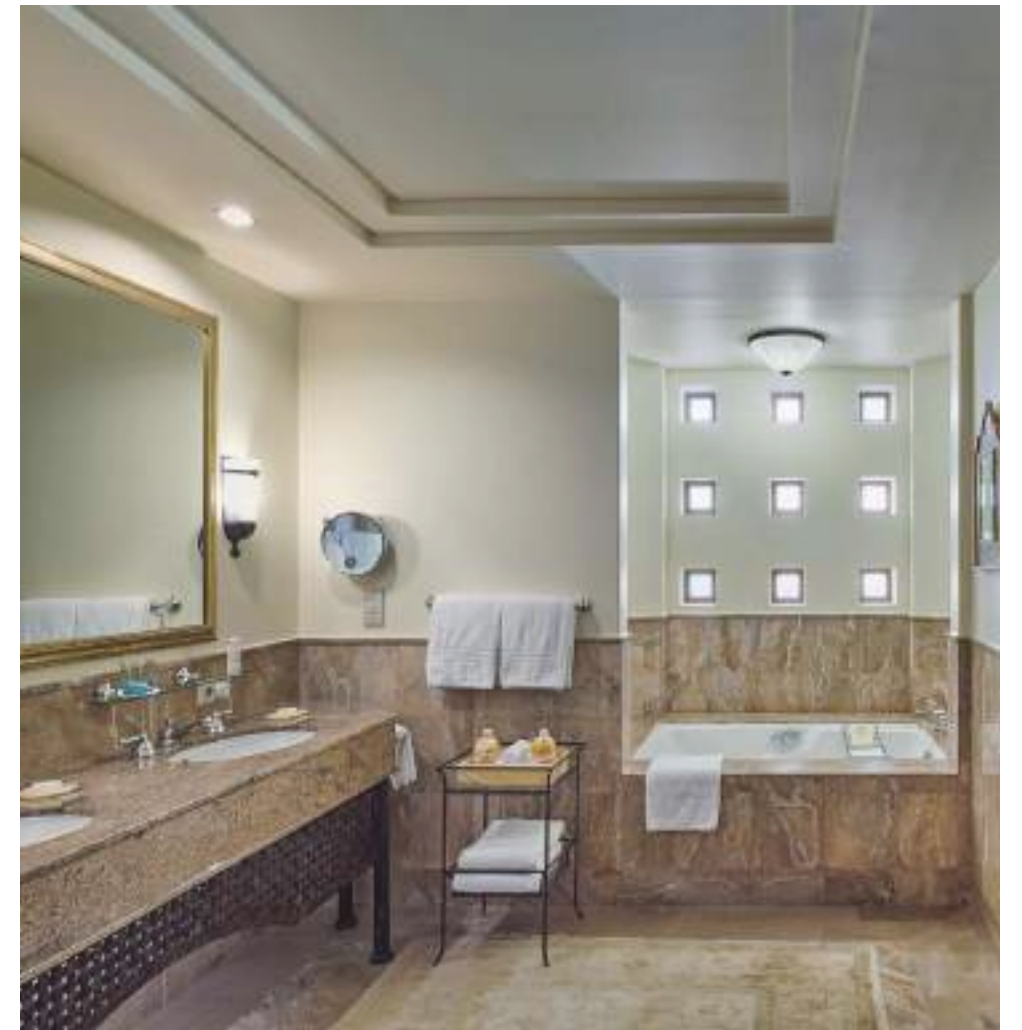
- Inviting entry foyer
- Living room with dining table for eight and wet bar
- Poolside terrace with three sofas and dining table for six
- Fully equipped kitchen with separate service entrance
- Two-bedrooms with private terraces
- Walk-in closets for him and her





## PRESIDENTIAL SUITE

Enjoy a truly presidential experience in this sumptuous two-bedroom sanctuary – a stand-alone beachfront residence with its own private pool and garden. Traditional Arabian opulence defines the living and dining areas, flowing outdoors to an expansive sea-view terrace. Envision alfresco dinner parties and evening soirées.



# DETAILS

## BEDS

Two king beds, or one king bed and two twin beds, One rollaway or one crib per bedroom upon request

## OCCUPANCY

4 adults and 3 children ages 12 and under

## SIZE

- 375 m2 (4,040 sq. ft.)
- Stand-alone

## BATHROOM

- Master marble bathroom, including two vanity sinks, water closet with bidet, glass-walled shower, spectacular tub and dressing area
- One spa-like marble bathroom, including two vanity sinks, water closet, glass-walled shower, bath tub and walk-in closet
- One guest powder room with shower

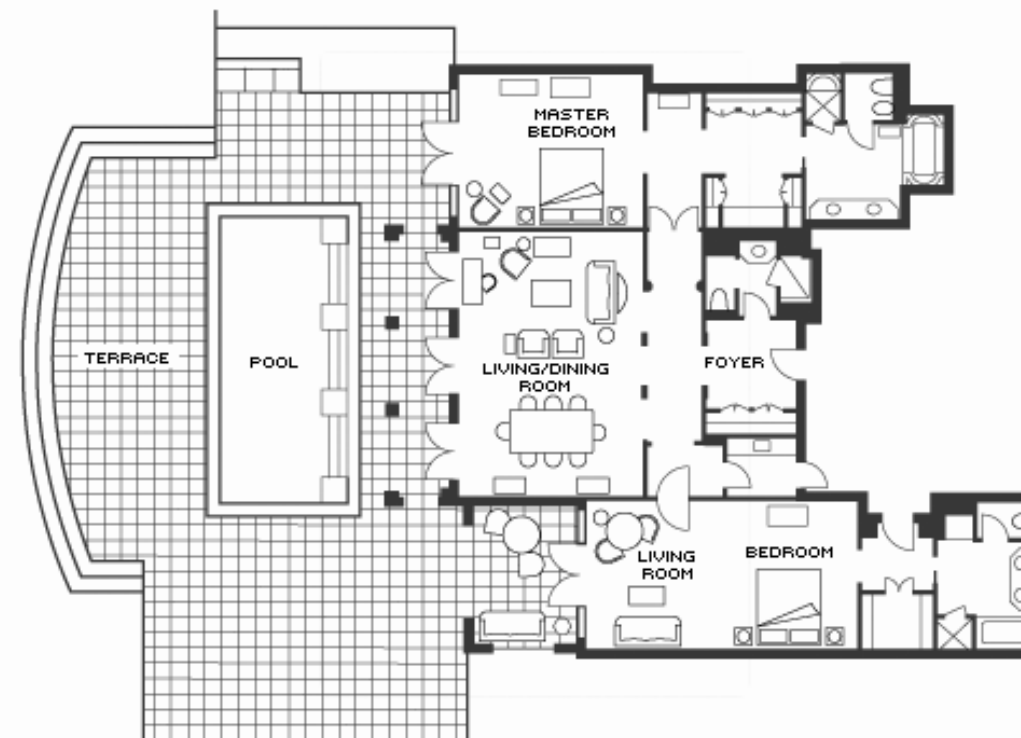
## VIEWS

Red Sea

## UNIQUE FEATURES

- Inviting foyer
- Living and dining area with table for eight
- Large stereo-sound television and stereo system
- Fully equipped kitchenette
- 28 m2 private pool
- Poolside terrace and garden

## FLOOR PLAN







## ROYAL SUITE

---

With a luxe pool and its own private beach, this three-bedroom masterpiece is a stand-alone residence with panoramic Red Sea views. Traditional décor adorns the opulent living room and formal dining room. Open-air events unfold on the wrap-around terrace, framed by lush gardens. Anticipate a regal Four Seasons experience.

# DETAILS

## BEDS

Two king beds and two twin beds, Three rollaways or cribs upon request

## OCCUPANCY

7 adults, or 4 adults and 3 children ages 12 and under

## SIZE

- 490 m2 (5,273 sq.ft.)
- Stand-alone

## BATHROOM

- Master marble bathroom, including two separate vanity sinks, water closet with bidet, glass-walled shower, spectacular tub and his and hers walk-in closets
- Two spa-like marble bathrooms, each including two vanity sinks, water closet, glass-walled shower and bath tub

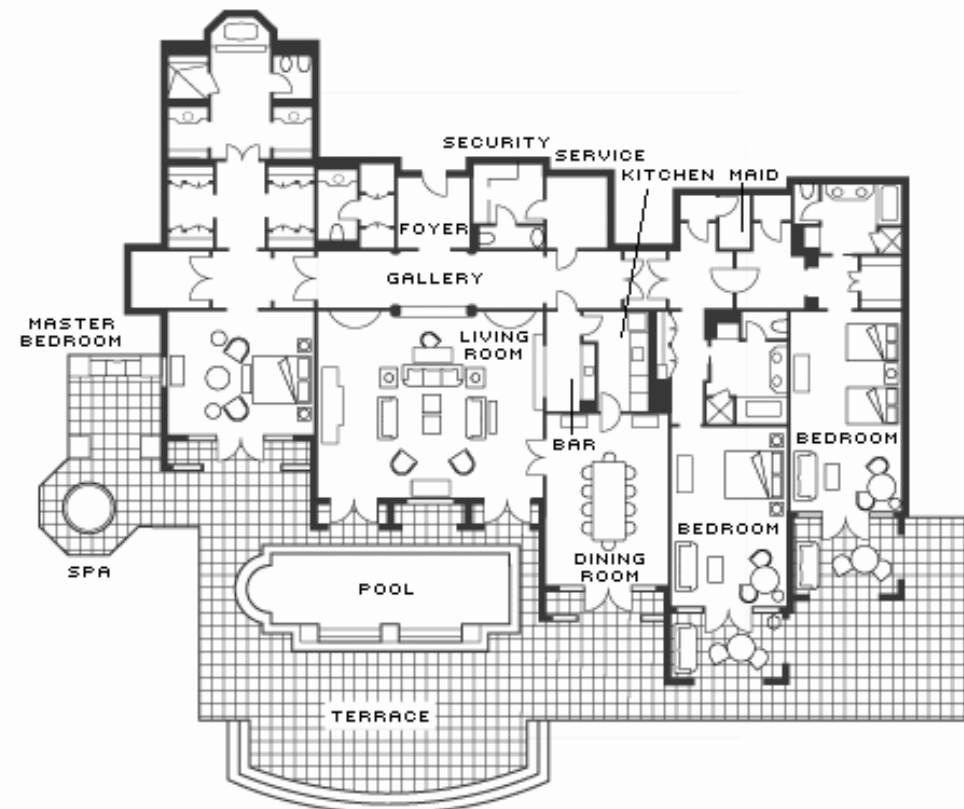
## VIEWS

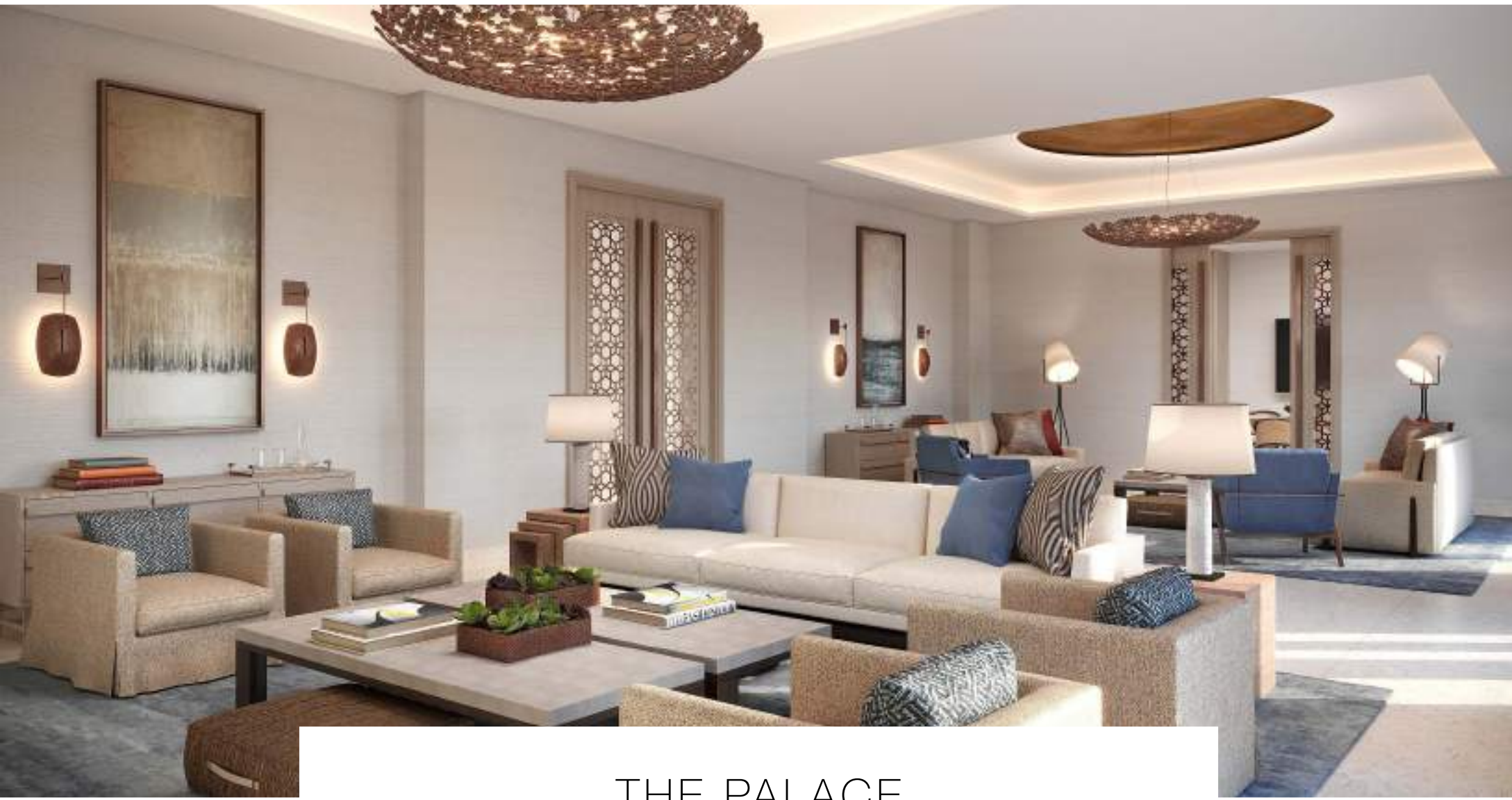
Red Sea

## UNIQUE FEATURES

- Inviting entry foyer and gallery
- Separate dining room with table for 10
- 40 m2 private pool and jetted tub
- Private beach and garden
- Fully equipped kitchen
- Entertainment system with 52-inch flat-screen television
- Security office with separate powder room

## FLOOR PLAN





## THE PALACE

---

Magnificent and modern, this stand-alone three-bedroom residence is our largest, most lavish suite, offering the ultimate in Four Seasons sophistication. Entertaining flows outdoors to the terrace, where two swimming pools are just steps away from the beach. Ultimate luxuries include a fitness room, spa treatment room, office space and a large dressing room.



# DETAILS

## BEDS

Two king beds and two twin beds, Three rollaway beds or cribs upon request

## OCCUPANCY

7 adults, or 4 adults and 3 children ages 12 and under

## SIZE

- 565 m2 (6,082 sq.ft.)
- Stand-alone

## BATHROOM

- Extra-large master marble bathroom, including two separate vanity sinks, with an in-mirror TV, water closet with bidet, glass-walled shower, sunken circular tub and access to a terrace with a built-in love seat
- Two spa-like marble bathrooms, each including two vanity sinks with in-mirror TV, water closet, glass-walled shower and jetted tub
- One guest powder room

## VIEWS

Red Sea

## UNIQUE FEATURES

- Living room and dining room for ten
- Poolside terrace with lounge area and dining table for eight
- Private pool, beach and garden
- Fully equipped kitchen with service entrance
- Multi-media room
- Spa treatment room
- Fitness room
- Dressing room
- Office space

## FLOOR PLAN





## FOUR-BEDROOM VILLA

Impressive in scale and traditional in luxury, this two-level, four-bedroom villa is a stand-alone residence with extravagant spaces for relaxing and entertaining. Spend all day by your private pool, then gather at the dining table as a Four Seasons chef prepares a feast in your kitchen.



# DETAILS

---

## BEDS

Two king beds and four twin beds, One sofa bed, plus two rollaways and two cribs upon request

---

## OCCUPANCY

8 adults, or 6 adults and 2 children

---

## SIZE

- 325 m2 (3,498 sq.ft.)
- Two-Level Residence

---

## BATHROOM

Three full marble bathrooms, each with two vanity sinks, water closet and glass-walled shower; two with bath tub; master with bidet

---

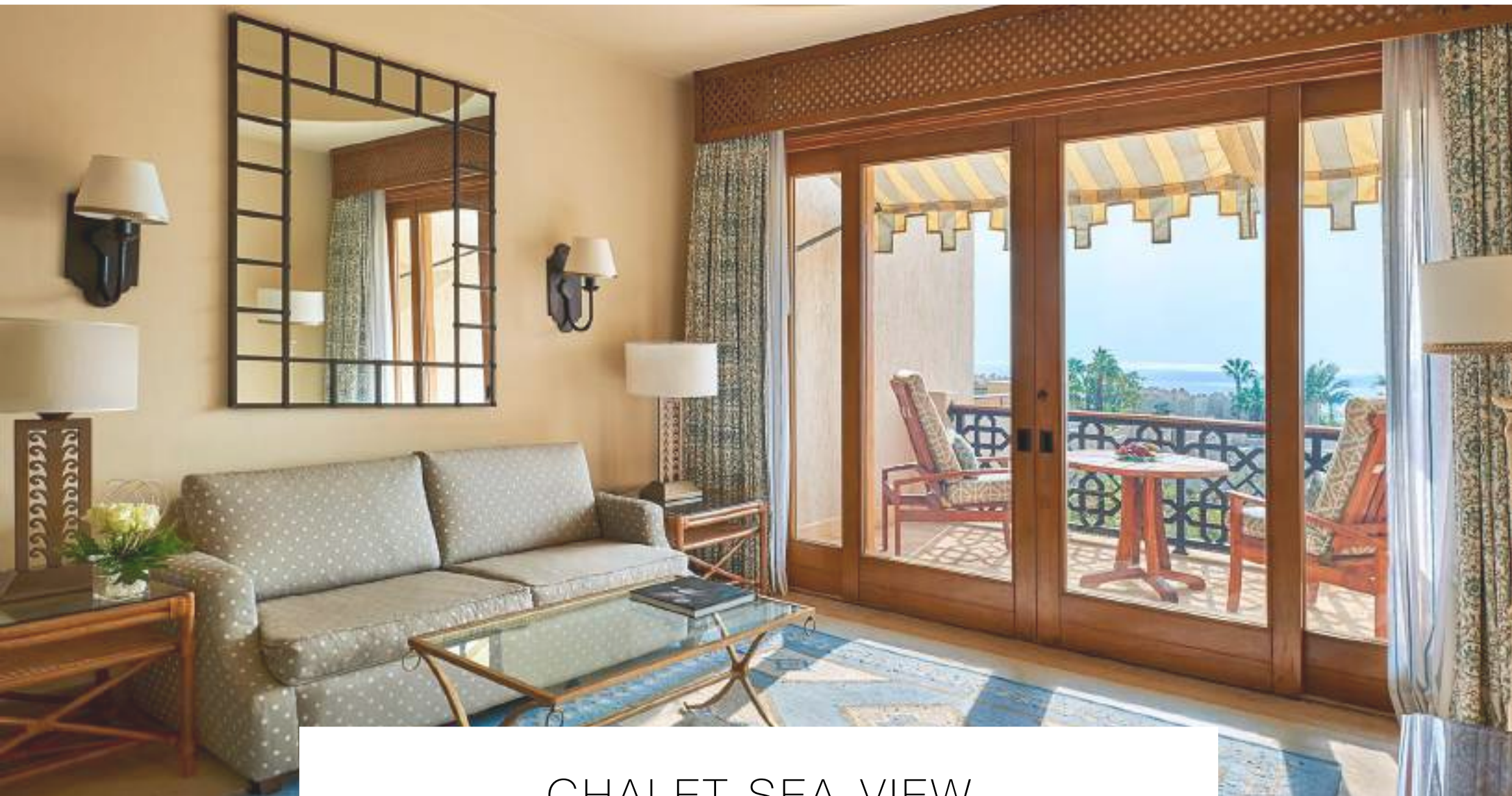
## VIEWS

Partial Red Sea and gardens

---

## UNIQUE FEATURES

- Private pool and spa pool
- Living room and formal dining room for eight
- Fully equipped kitchen
- Additional babysitter's bedroom with ensuite bath



## CHALET SEA-VIEW

With elevated Red Sea views from the upper floor, this residential-style chalet offers traditional Arabian décor and extra convenience with a kitchenette. Spread out and relax in the spacious living and dining area, and find privacy in two well-separated bedrooms – one with balcony – and two bathrooms.



# DETAILS

## BEDS

One king bed and two twin beds, One sofabed, plus one rollaway or crib on request

## OCCUPANCY

4 adults and 1 child, or 2 adults and 3 children 12 years and under

## SIZE

- 125 m2 (1,345 sq.ft.)
- Upper level

## BATHROOM

Two full marble bathrooms, each with two vanity sinks, water closet and glass-walled shower; one with bath tub

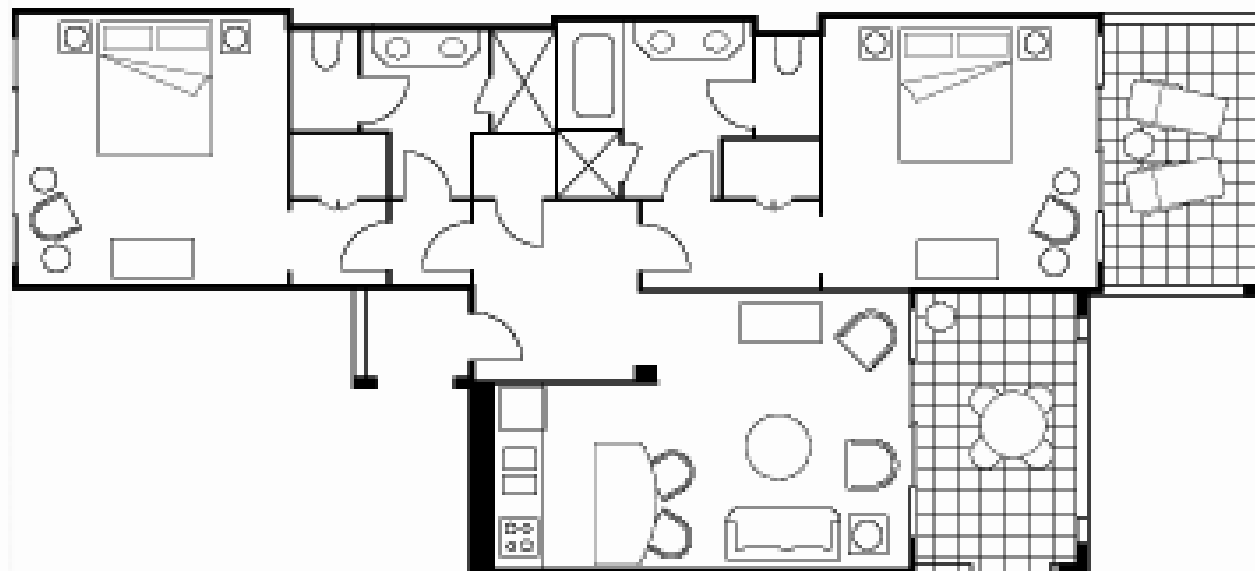
## VIEWS

Red Sea

## UNIQUE FEATURES

- Living and dining areas
- Fully equipped kitchenette
- Washer and dryer
- Close to the family-oriented Gezira Pool and the Kids For All Seasons club

## FLOOR PLAN







## CHALET PALM-VIEW

Bring together family and friends in this two-bedroom chalet, decorated in a warm traditional Arabian style. Enjoy extra independence with your own kitchenette, while Four Seasons service is always ready to assist. The outdoor terrace is perfect for morning coffee or al fresco dining.



# DETAILS

## BEDS

One king bed and two twin beds, One sofa bed, plus one rollaway or crib on request

## OCCUPANCY

4 adults and 1 child, or 2 adults and 3 children 12 years and under

## SIZE

- 125 m2 (1,345 sq.ft.)
- Lower level and upper level

## BATHROOM

Two full marble bathrooms, each with two vanity sinks, water closet and glass-walled shower; one with bath tub

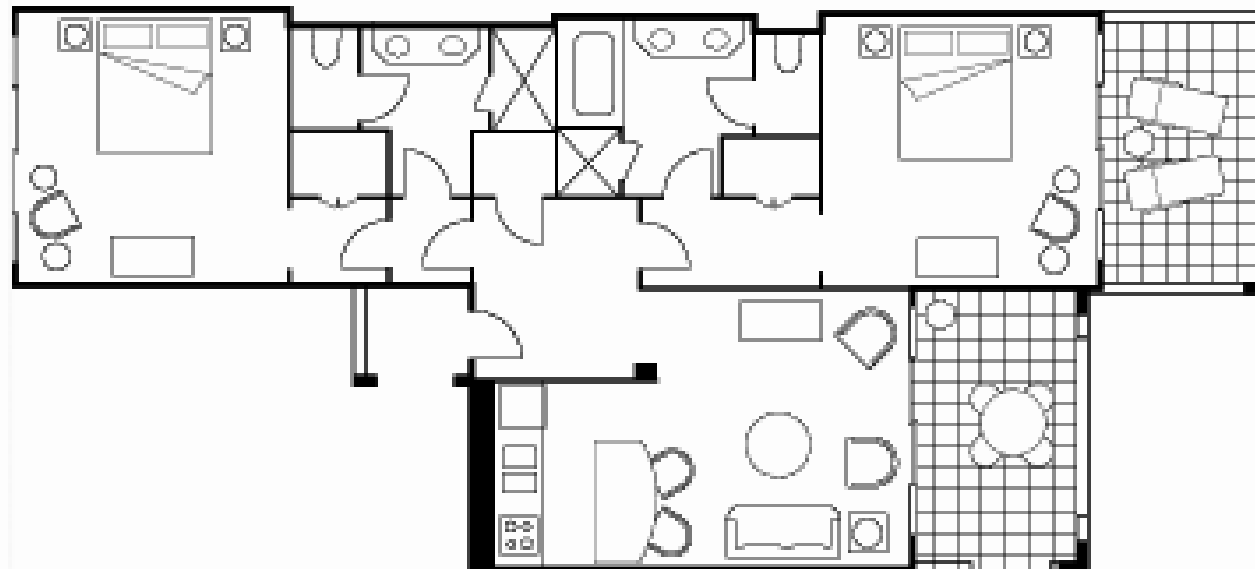
## VIEWS

Resort courtyard

## UNIQUE FEATURES

- Living and dining areas
- Fully equipped kitchenette
- Washer and dryer
- Close to the family-oriented Gezira Pool and the Kids For All Seasons club

## FLOOR PLAN





## LOCATION

- Sharm El Sheikh International Airport (SSH)  
10 min / 7.5 km
- Sharm Al-Sheikh Museum  
12 min / 11 km
- Al Sahaba Mosque  
25 min / 21 km
- Ras Mohamed Nature Reserve  
60 min / 46 km
- St. Catherine Mountain  
160 min / 207 km

## ACCOMMODATION

315 rooms and suites offering Red Sea or island views

- 169 spacious rooms
- 90 multi-bedroom chalets and villas
- 52 one and two bedroom suites most with a private pool
- 2 Presidential Suites
- 1 Royal Suite
- The Palace

## MEETINGS AND EVENTS

- Tiran Ballroom 750 m<sup>2</sup>
- Pre-Function Foyer 350 m<sup>2</sup>
- Sanafir Meeting Room 130 m<sup>2</sup>
- Aqaba Meeting Room 80 m<sup>2</sup>
- Nabeq Meeting Room 60 m<sup>2</sup>
- Tiran Courtyard Garden 760 m<sup>2</sup>
- Royal Palm Garden 2,500 m<sup>2</sup>
- Reef Garden 500 m<sup>2</sup>
- Pearl Garden 270 m<sup>2</sup>

## DINING

12 world-class restaurants, lounges and bars

- Zitouni Traditional Lebanese
- Arabesque Middle Easter Specialties
- Reef Grill Grilled Meat and Seafood
- Il Frantoio Elegant Italian
- Bullona Stylish Mediterranean
- Yatai Japanese and Pan-Asian
- Sails Seaside Lounge
- Waha Poolside Favourites
- Gezira Family-Friendly Specialties
- Luna Poolside Latin Flare
- Breeze Wellness Beach Bar
- Citadel Lounge Cocktails and Light Snacks

## SPA AND WELLNESS

- 12 treatment rooms
- 24-hour fitness centre
- Outdoor lap pool

## RECREATION

- 5 outdoor pools
- 1 km private beachfront
- Dive center, water activities and charter yachts
- Kids For All Seasons club
- 4 tennis courts
- Squash court

## CONNECT WITH US

[fourseasons.com/sharmelsheikh](https://www.fourseasons.com/sharmelsheikh) >



Four Seasons Resort Sharm El Sheikh  
One Four Seasons Boulevard Sharm El Sheikh  
Tel. +20 69 360 3555

[VIEW OUR DIRECTIONS & MAP >](#)

The marks "FOUR SEASONS", "FOUR SEASONS HOTELS AND RESORTS", any combination thereof and the Tree Design are registered trademarks of Four Seasons Hotels Limited in Canada and U.S.A. and of Four Seasons Hotels (Barbados) Ltd. elsewhere.